

# PRECISION TSUGAMI

CORPORATE PROFILE

## CEO Message

We aim at improving in quality as we strive to deliver products that bring customer satisfaction.

Since our founding in 1937, we at TSUGAMI have pursued a high level of technological prowess, constantly devoting effort to the development, manufacture and sale of new products.

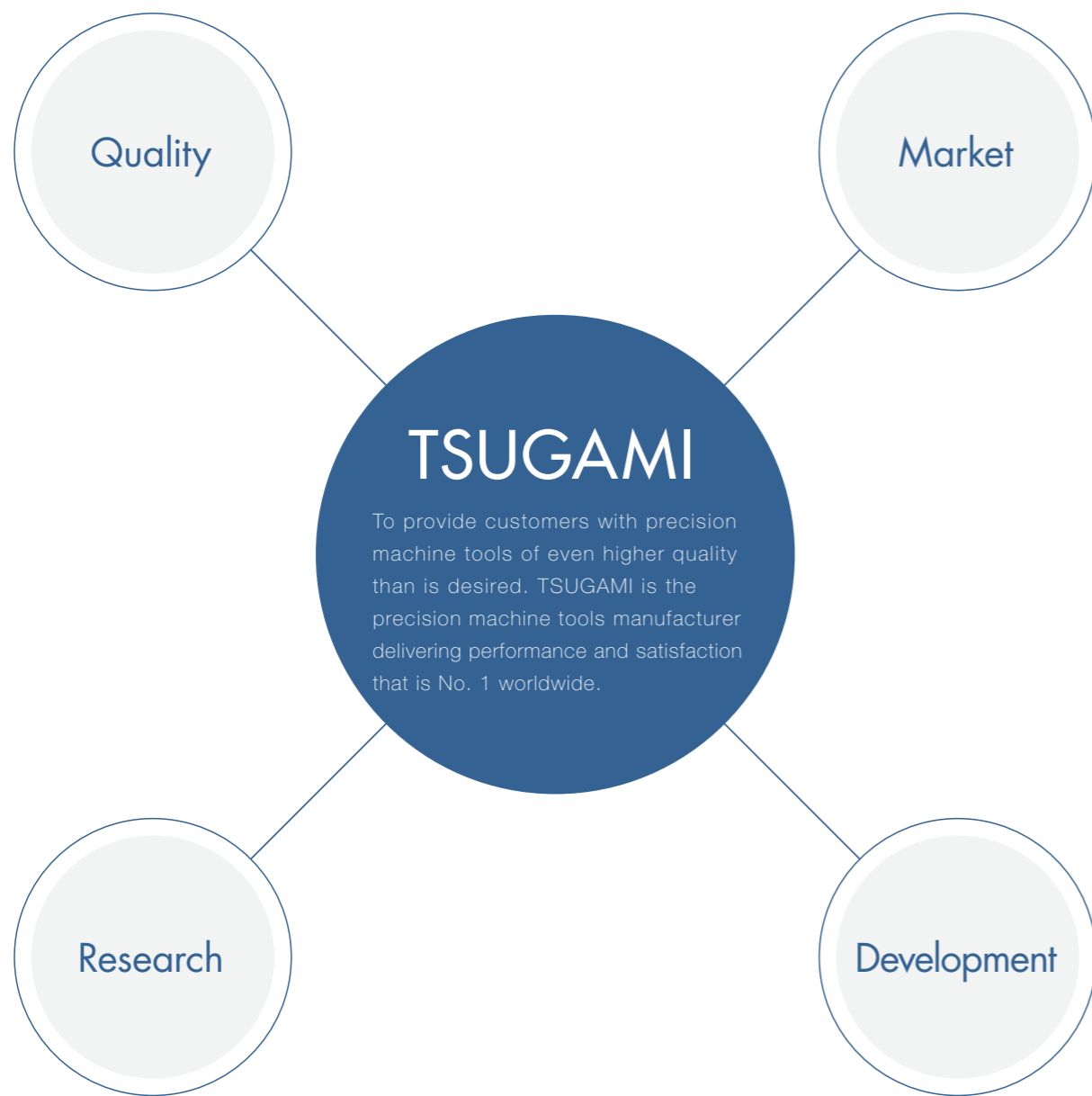
Based on the precision technology we've cultivated over many years, we are currently concentrating our efforts on research and development in order to adequately support radical technological innovation.

By understanding customer needs in advance, we will continue striving day and night to obtain a high level of customer satisfaction throughout the world, with Accuracy, Speed and Rigidity as our slogan.

We hope you'll continue to choose TSUGAMI to meet your expectation.

Takao Nishijima Chairman & CEO

西嶋 尚生



We deliver “Accuracy”,  
 “Speed” and “Rigidity” that are No. 1 worldwide,  
 as a manufacturer of  
 high-quality precision machine tools.



The reliability and  
 satisfaction of  
 world-class quality  
 are produced here.

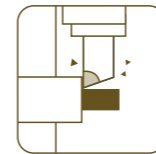
Since TSUGAMI was established in March, 1937 in Nagaoka-shi, Niigata pref., it has constantly pursued a high level of technological prowess, producing numerous precision machine tools. In 1949, just after the war, it was listed on the Tokyo stock exchange, and since then has continued to grow as a public company. After almost 80 years in business, we now have 3 production bases in Japan, India and China, and export products from Japan and China to countries all around the world. Within Japan we carry out technological development for the entire group and production of high-end products, while China handles efficient mass production of products for high-volume market segments. In India, where we established a subsidiary in 2011, we are endeavoring to play an active role in the promising Indian market. Our high-end products pursue a world-class level of technological prowess, while high volume products endeavor to deliver world-class quality and cost performance. TSUGAMI continues to ensure to satisfy the needs of customers throughout the world.





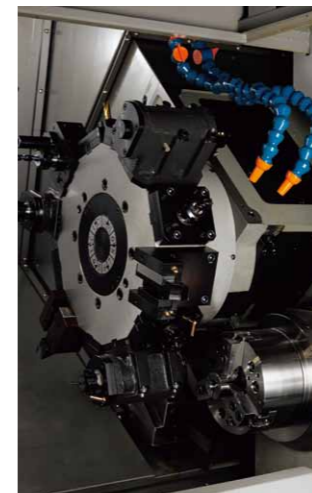
# Machine Tools for Watch, Communication Device, Medical Equipment and Automobile. Wide Range Line-up for various needs.

## AUTOMATIC LATHE/CNC LATHE/ TURNING CENTER



Bar work / Chuck work / Gang tool slide / Turret  
Siding head stock/ Fixed head stock /  
Combined machine

As one of TSUGAMI's major products, our automatic lathes/lathes receive high praise. In general, lathes employ a machining process in which a cylindrical work piece is revolved and a cutting tool brought into contact with it to shave off material, and are the most commonly produced type of machine tools. Automatic lathes are suited to mass production, and by adding options such as a material feeding machine, all steps from material feeding to removal after machining can be carried out automatically, enabling around-the-clock unattended operation. They are perfect for machining small components for a wide range of fields like IT related components, automotive parts, etc.

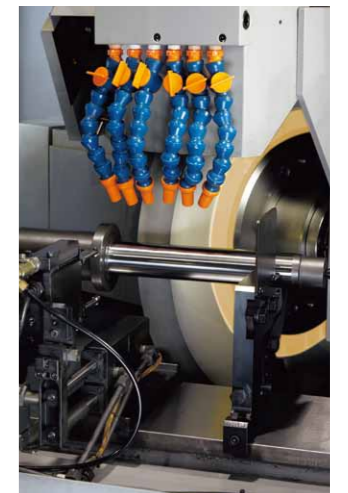


## GRINDING MACHINE



Cylindrical Grinding Machine  
Universal Grinding Machine / Straight /  
Angular / Carbide tool Grinding Machine /  
Combined Grinding Machine

A cylindrical grinding machine is a type of machine tool that uses a grinder for machining by rotating the grinder and cylindrical work piece. It can polish a surface to a mirror-like finish, and is primarily used as the final machining process. We supply products to fit each customer's type of production, from automotive engine parts, transmission parts, hydraulic components, and IT related components, to finished goods such as medical equipment.



## MACHINING CENTER

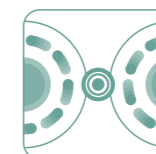


Horizontal machining center  
Vertical machining center

Machining centers are combined machine tools equipped with an automatic tool exchange function which enables them to continuously carry out various types of machining. Machining is carried out by fixing the work piece in place and revolving a tool such as a drill to shave off material. It becomes possible to machine parts with complicated shapes using just one machine. They support a wide range of components from small aluminum parts for IT-related equipment including electric appliances/office automation (OA) equipment, to steel parts for automotive and industrial machinery.



## THREAD AND FORM ROLLING MACHINE



CNC Precision Thread and Form  
Rolling Machine  
Precision Thread and Form Rolling Machine

Thread and form rolling machines are plastic working machines which shape the work piece by applying pressure to it. It is a machining process in which the work piece is inserted between a pair of rolling dies using hydraulics or a servo-motor so that the shape of the dies is precisely reproduced on the work piece. Because it does not produce cutting chips, this machining method is gaining attention for its ability to save material resources and its light environmental burden.



## Providing the Highest Level Performance in the World

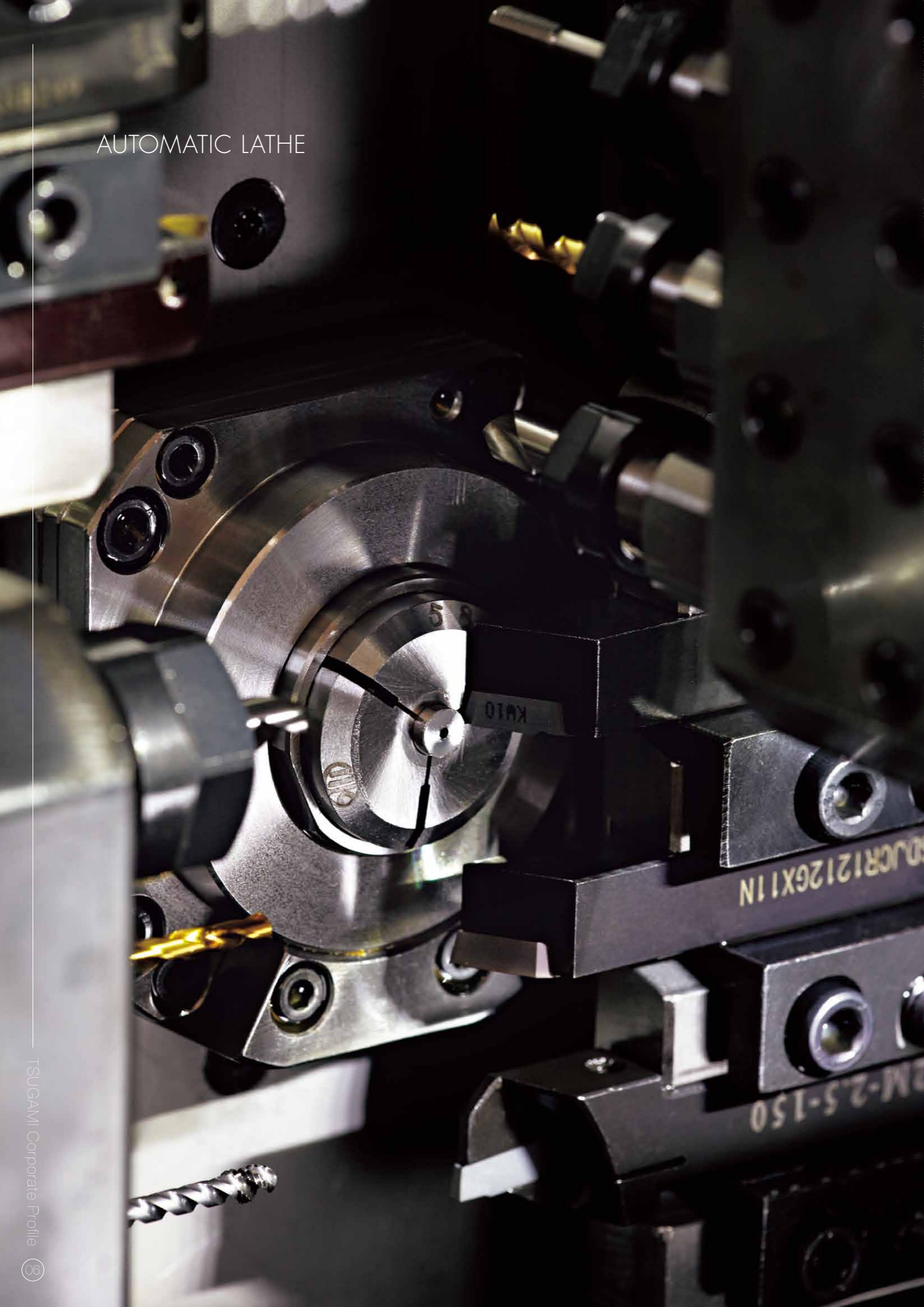
Evolution of the high-end products (high performance products) produces a volume zone (high value-added products).

TSUGAMI's line-up of high performance/high level machine tools reflects R&D that is focused on an era of continual evolution. We endeavor to deliver world-class products through 2 aspectual integration of deployment based on market needs, with research into technical innovation. By pursuing a level of performance that

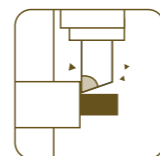
surpasses that required for a variety of needs, we secure customer satisfaction with precision machine tools which give birth to high value-added products. From here out as well, we will strive to make products that reliably meet the expectations of precision parts machining.



AUTOMATIC LATHE



Realizing optimum mass production machining through reliable stable precision.



### Automatic Lathe

TSUGAMI's automatic lathes position the tools so as to minimize the heat generated during machining, and realize long-term stable precision machining through their highly rigid cast iron base which suppresses vibration. You can select a spindle suited to heavy duty machining, long or short objects, while TSUGAMI's original guide-bushing-less spindle (patented) is capable of high-precision machining with low-cost materials and leaves an extremely short remnant of just 30 mm.

Automatic lathes are suited to mass production, and by adding options such as a material feeding machine all steps from material feeding to removal after machining are carried out automatically, enabling around-the-clock unattended operation. They support the machining of small parts for a wide range of fields such as watches, mobile phone devices, optical communications, office automation (OA) equipment, medical equipment, automotive parts, etc. Boasting reliable long-term stable precision, they are suitable for high precision mass production machining.



SS327-5AX



P034



B0205-III





CNC LATHE



M06JC

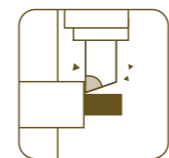


M08J-II



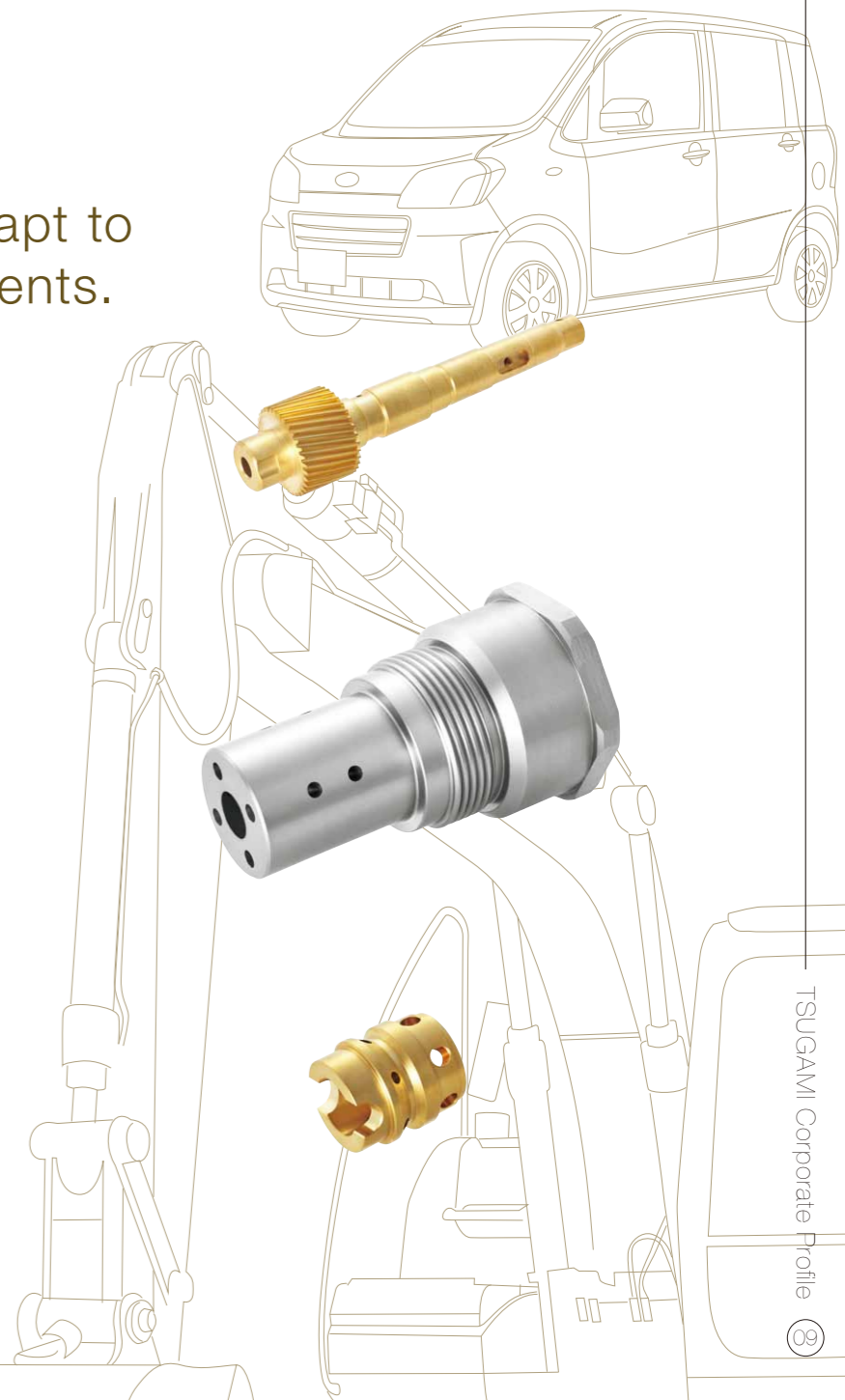
M08SY-II

From bar work to chuck work, one machine can adapt to a variety of requirements.



CNC Lathe

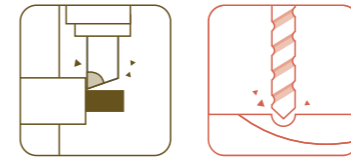
In general, lathes employ a machining process in which a cylindrical work piece is revolved and a cutting tool brought into contact with it to shave off material, and are the most commonly produced type of machine tools. TSUGAMI has a lineup of turret lathes (M series) supporting everything from bar work to chuck work. We have products ranging from dedicated lathes, to models that incorporate a spindle/back spindle and Y-axis milling for process aggregation. Combining a high rigidity spindle/turret tool rest with a space-saving footprint, they are suitable for automotive parts, construction machinery parts, etc. Through a variety of options such as automation support, they handle a wide range of factory demands.





TURNING CENTER

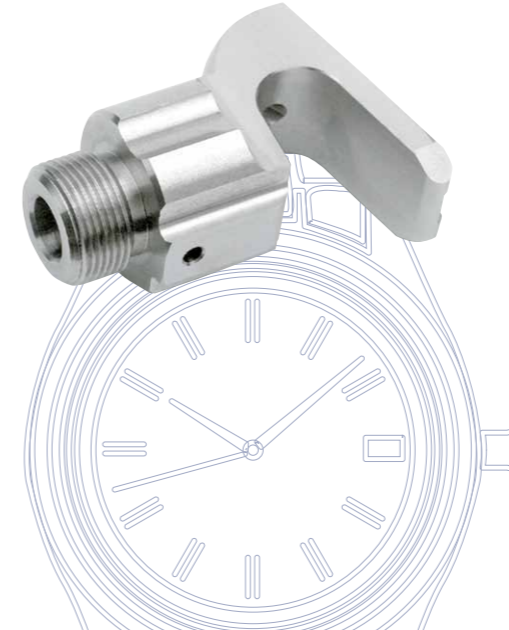
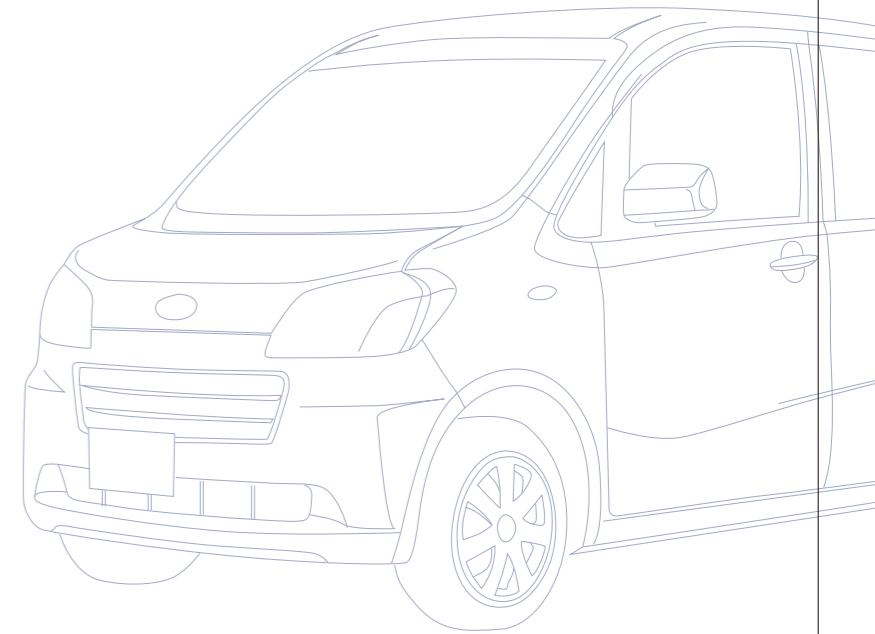
Optimal for turning that includes a lot of milling.  
Integrates the milling function  
of a machining center with a lathe function.



Turning center

This is a combined processing machine that performs the aggregate processes of turning and machining for bar work or chucking work in one machine.

Our turning center can meet the following kinds of demands: when you do not have enough rotating tools; want more milling capability; want to process items that have until now been machined on both a lathe and a machining center, on one machine; want to machine multiple work pieces without changing the set up; or when you want to perform complex machining on long work pieces.



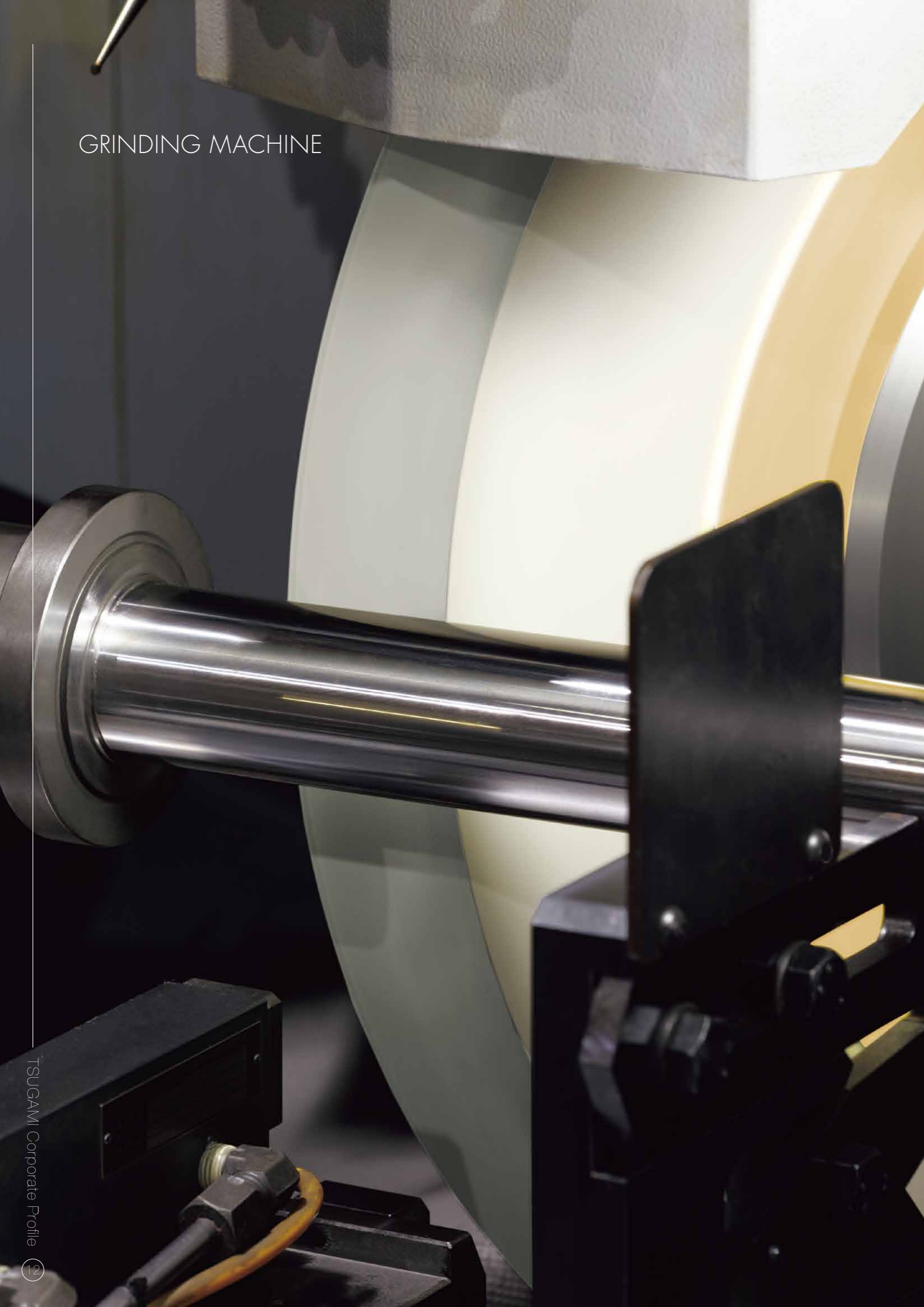
TMA8F



TMA8JC



# GRINDING MACHINE



Great for high-grade cylindrical grinding as the final process in a wide range of fields.



## Grinding Machine

TSUGAMI's grinders employ a low friction V - horizontal structure for the table and high-precision high-rigidity hydrodynamic bearings for the grinding wheel spindle, so that any kind of work piece can be machined into a perfect roundness or ideal cylindricity. They receive high praise for their stable precision and durability.

This machine enables cylindrical grinding processing of small and medium components in fields ranging from unhardened material to highly rigid parts made of hardened steel or ceramics. The device can handle diverse items, ranging from single components, such as mold pins, to parts for automobile engines and transmissions, hydraulic parts, IT components, and medical equipment. From limited production to mass production lines, the machine can meet all of our customer's manufacturing needs.



G300



G18-II



G350





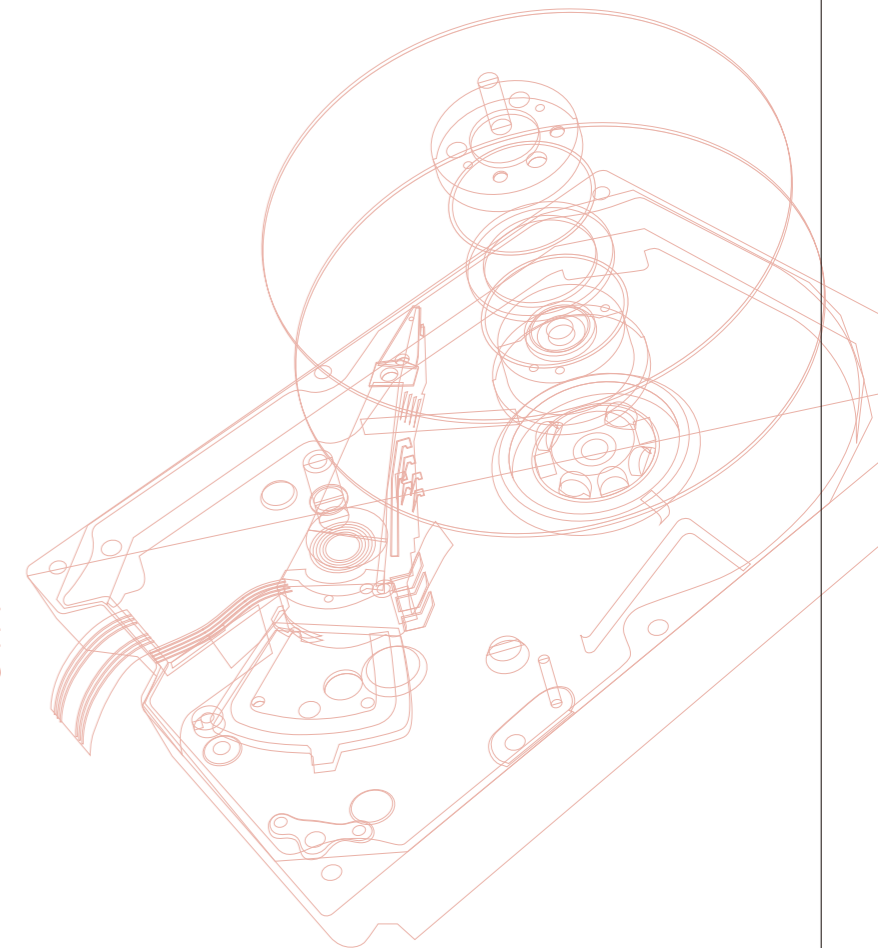
MACHINING CENTER



VA3



VA2



Parts with complicated shapes can be machined using just one machine.



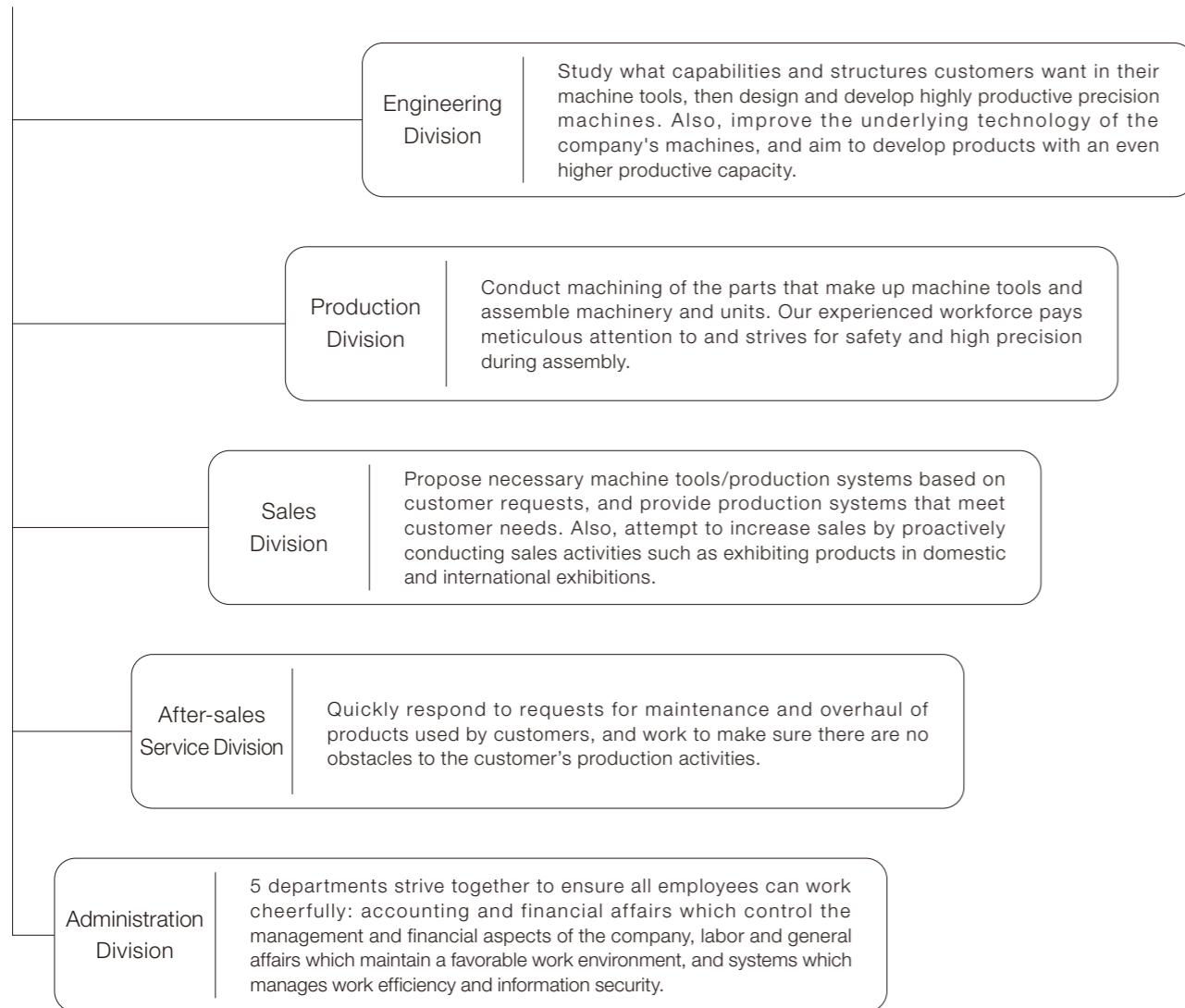
### Machining center

TSUGAMI has created a machining center series to handle everything from small aluminum parts for IT-related equipment including electric appliances/office automation (OA) equipment, to steel parts for automotive and industrial machinery. In addition to drilling and tapping, realize the true value of milling. With so few of the changes in machining dimensions that accompany the passage of operating time, our machining centers contribute to increased productivity by combining high speed/high precision machining. We propose the optimal system for all our models both the vertical and horizontal types which have a space-saving design that makes factory layout easy.

# About TSUGAMI

## Organization's role

### Communication

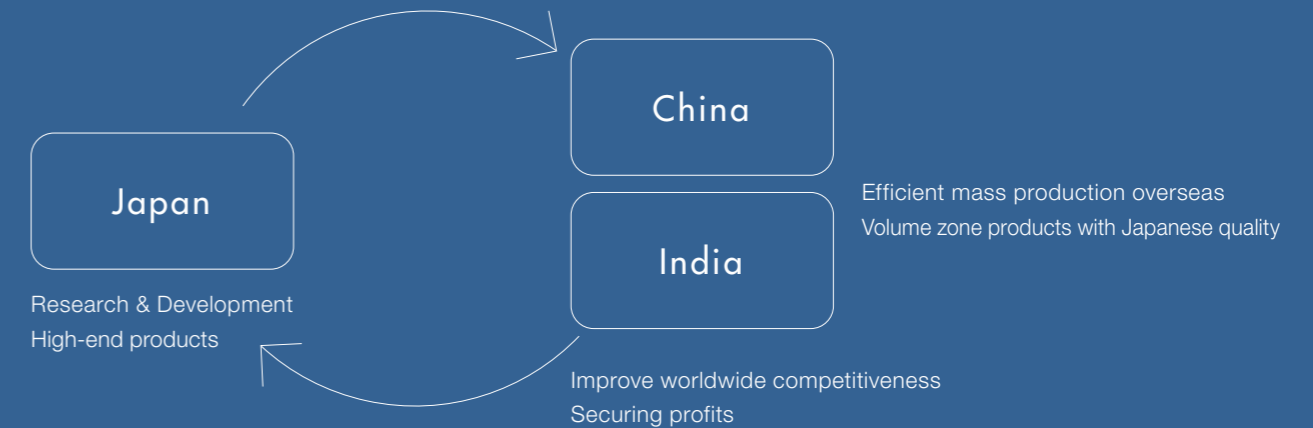


## TSUGAMI Japan boasts world-leading precision technology

Since our founding in 1937, TSUGAMI has routinely delivered high quality products with the purpose of consistently advancing our precision technology.

With its accumulated experience and tradition of technological prowess, the Japanese domestic branch primarily develops and creates cutting-edge new products. Also, by leveraging that technology, we are supplying high quality products from our production bases in Asia.

### 3 production bases to the world



TSUGAMI was founded in March, 1937 in Nagaoka-shi, Niigata pref., and since its founding the Nagaoka factory has continued production in the same location for close to 80 years. In Japan we have three factories in Nagaoka, Takami, and Niigata in Niigata prefecture. They are responsible for technical development for the entire group and carry out production of high-end products. Also, in 2003 we established Precision PRECISION TSUGAMI (CHINA) CORPORATION on a 30,000 square meter plot of land in Zhejiang China. It has since become the largest production base in our group, expanding to cover an area of 140,000 square meters with 1,400 people engaged in production. Furthermore, in 2011 we established a production base in India as well. Hereafter, we plan to develop our production base in this promising market into one to rival our base in China.

## Environmental Policy

Company-wide initiatives and domestic factories

TSUGAMI's Management Philosophy is "contributing to the development of society through the provision of high-precision, high-speed and high-rigidity products." And we believe global environment conservation, which the world is striving for, is one of the corporate responsibilities that TSUGAMI should fulfill. We regard this as a key indicator of the quality of our products, and of all production activities carried out at our factories.

### Improving Creation of Environmental Goals/Objectives

We will set ourselves technically and economically achievable environmental goals and targets in line with environmental impact assessments, at every stage from product development to production and waste disposal. We will make every effort to preserve the environment, and will continually review targets so that we can make ongoing improvements.

### Compliance with Regulations

We will comply with all national legislation, local ordinances and industry agreements relating to environmental preservation, and will make every effort to prevent environmental contamination.



### Management that clarifies responsibility

To carry out the above commitments effectively, we will document all essential regulations relating to environmental preservation, including this Environmental Manual, raise awareness amongst all personnel working at the Nagaoka Factory, maintain records and appoint a manager to oversee such activities.

### Disclosure of Information

We will ensure that all personnel working at the Nagaoka Factory are aware of documents and records relating to the factory's environmental management system, and will ensure that systems are fairly maintained so that key environmental information can be disclosed to any third party on request, via the specified internal procedure. Also, this environmental policy will be widely published, and by making it known to customers and suppliers in writing to gain their understanding and cooperation, we will more efficiently prevent environmental pollution.



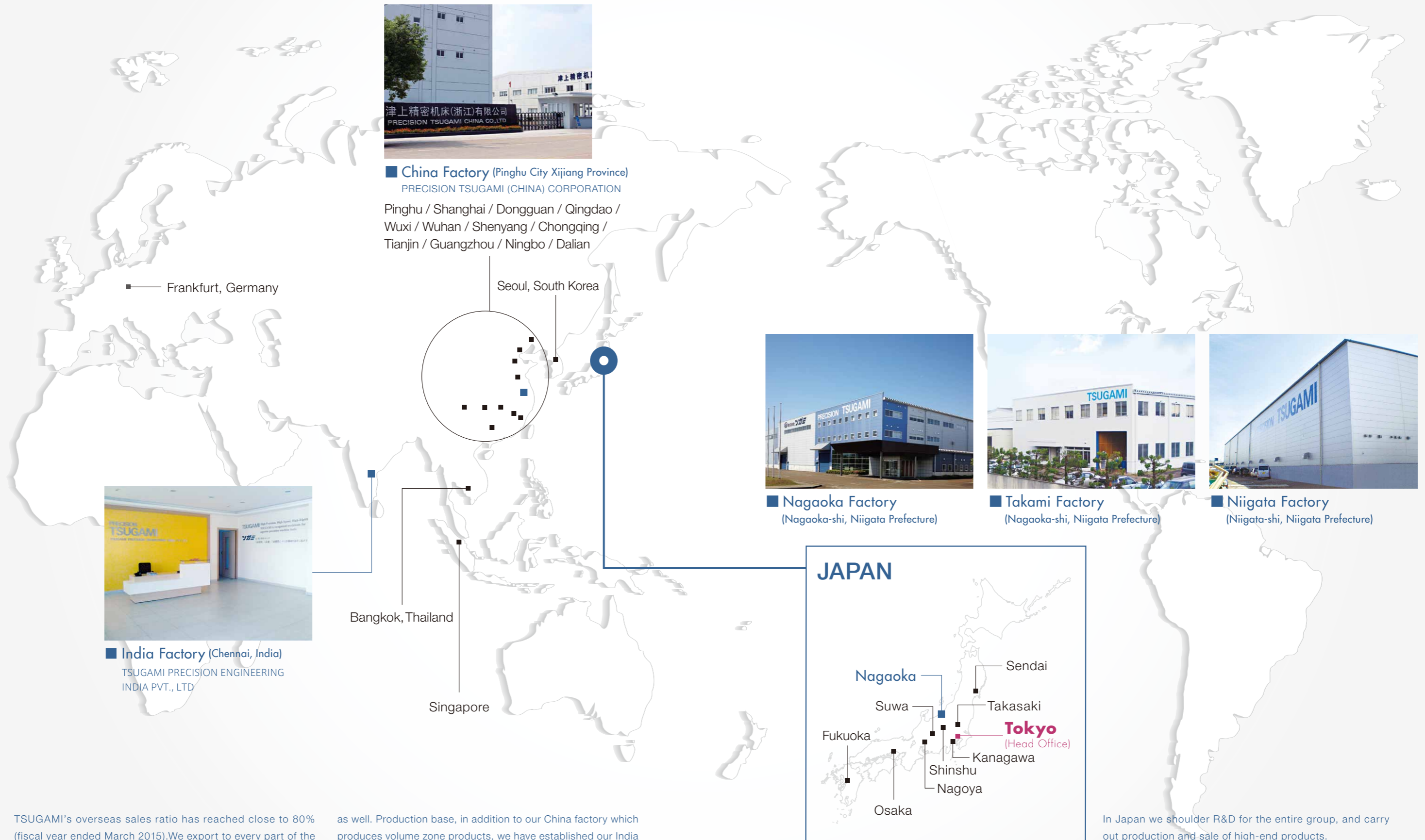
# From Japan and Asia to the World

Head Office / Tokyo

Domestic sales offices / 9 locations

International sales offices / 17 locations

■ Production bases / Domestic: 3 locations International: 2 locations



TSUGAMI's overseas sales ratio has reached close to 80% (fiscal year ended March 2015). We export to every part of the world, and beginning with the establishment of a local subsidiary in Thailand in 1989 as a sales/service base, we have moved on to establish locations in Germany, South Korea, and Singapore

as well. Production base, in addition to our China factory which produces volume zone products, we have established our India factory as a market to focus on in the future, and we continue to supply products that pursue a world-leading level of technology together with cost performance.

In Japan we shoulder R&D for the entire group, and carry out production and sale of high-end products.

## Corporate Overview

Corporate name	TSUGAMI CORPORATION
Established	March 15, 1937
Head office	12-20, Tomizawa-cho, Nihonbashi, Chuo-ku, Tokyo 103-0006, JAPAN
Telephone	81-3-3808-1711
Facsimile	81-3-3808-1511
Paid-in capital	12,345 Million yen (as of March 31, 2015)
Issued shares	74,919,379 shares (as of March 31, 2015)
Stock code	6101 (Tokyo Stock Exchange)
Number of employees	1,959 (Consolidated, as of March 31, 2015)
Business activity	Manufacture and sales of precision machine tools
Major banks	Sumitomo Mitsui Banking Corporation, Bank of Tokyo-Mitsubishi UFJ, Ltd., Mizuho Bank, Ltd., The Hokuetsu Bank, Ltd., The Daishi Bank, Ltd., The Hachijuni Bank, Ltd., Mitsubishi UFJ Trust and Banking
Group Companies	TSUGAMI MACHINERY CO., LTD. TSUGAMI GENERAL SERVICE CO., LTD. PRECISION TSUGAMI (CHINA) CORPORATION Shinagawa Precision Machinery (Zhejiang) Co., Ltd. Precision Tsugami (China) Corporation Limited Precision Tsugami (Hong Kong) Limited TSUGAMI (THAI) CO., LTD. TSUGAMI EUROPE GmbH TSUGAMI KOREA CO.,LTD. TSUGAMI PRECISION ENGINEERING INDIA PVT., LTD. TSUGAMI Universal Pte. Ltd.

## Corporate History

1923	Research of block gauge was initiated at Honjo Ohira-cho in Tokyo
1937	Tsugami Mfg., Co., Ltd was established in Nagaoka-shi, Niigata pref. Production of block gauge was started.
1942	Shinshu factory was constructed in Saku-shi, Nagano pref. and production was started.
1946	Production of grinding machine, and thread rolling machine was started.
1949	Stock offering on Tokyo, Osaka and Niigata stock exchanges.
1957	Production and sale of sliding headstock automatic lathe was started.
1970	Corporate name was changed to Tsugami Corporation
1974	Tsugami Machine Tool Trading Corp. established.
1978	Precision automatic lathe "Mercury" was developed and its sale was started.
1982	Production and sale of Machining center was started.
1989	TSUGAMI (THAI) was established.
1999	Quality Control Management System ISO 9001 was awarded to Shinshu Factory. Quality Control Management System ISO 9001 was awarded to Nagaoka Factory.
2000	New Plant to assemble automatic lathes in Nagaoka Factory was completed. Environment Management System ISO 14001 was awarded to Nagaoka Factory.
2001	New Plant to assemble grinding machines in Nagaoka Factory was completed.
2003	PRECISION TSUGAMI (CHINA) CORPORATION was established.
2004	Subsidiary, Tsugami Machine Tool Trading Corp. was merged.
2005	New plants to assemble machines in Nagaoka factory and Shinshu factory were completed.
2007	TSUGAMI CORPORATION South Korea Branch was established. TSUGAMI GmbH was established in Germany.(now TSUGAMI EUROPE GmbH)
2010	TSUGAMI KOREA Co., Ltd. was established. Shinagawa Precision Machinery (Zhejiang) Co., Ltd. was established in China.
2011	TSUGAMI PRECISION ENGINEERING INDIA PRIVATE LIMITED was established. Quality Control Management System ISO 9001 was awarded to PRECISION TSUGAMI (CHINA) CORPORATION. Environment Management System ISO 14001 was awarded to PRECISION TSUGAMI (CHINA) CORPORATION.
2012	TSUGAMI Universal Pte. Ltd. was established in Singapore.
2013	Precision Tsugami (China) Corporation Limited was established. Precision Tsugami (Hong Kong) Limited was established.

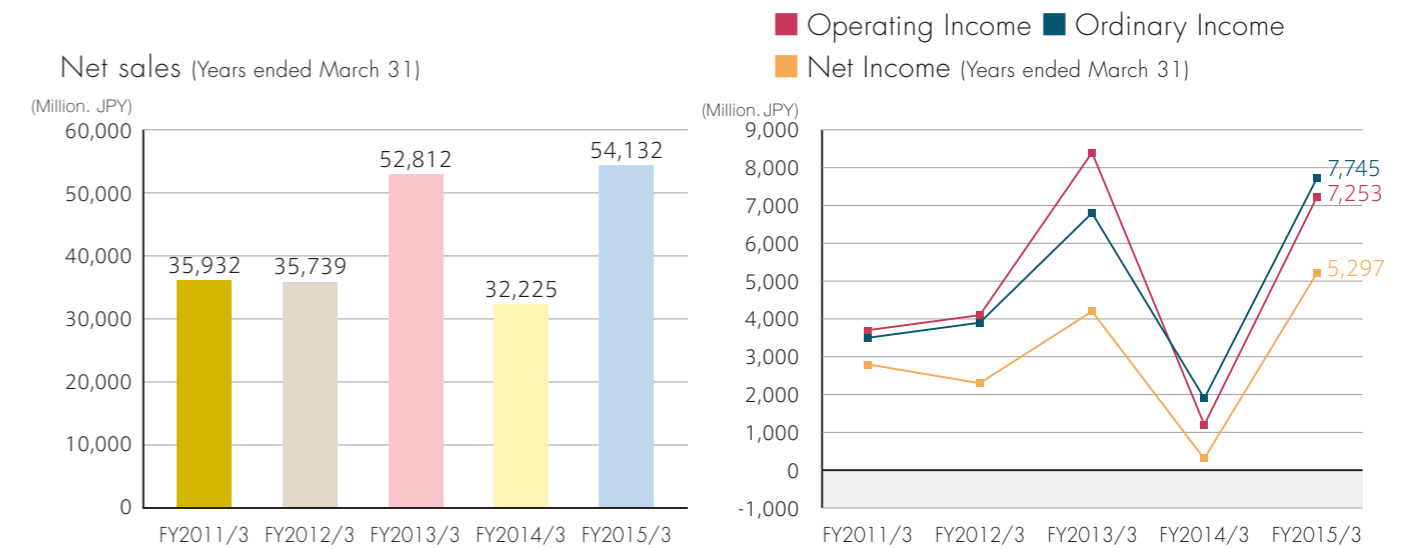


# Relationship of Responsibilities with Society, Stakeholders, etc.

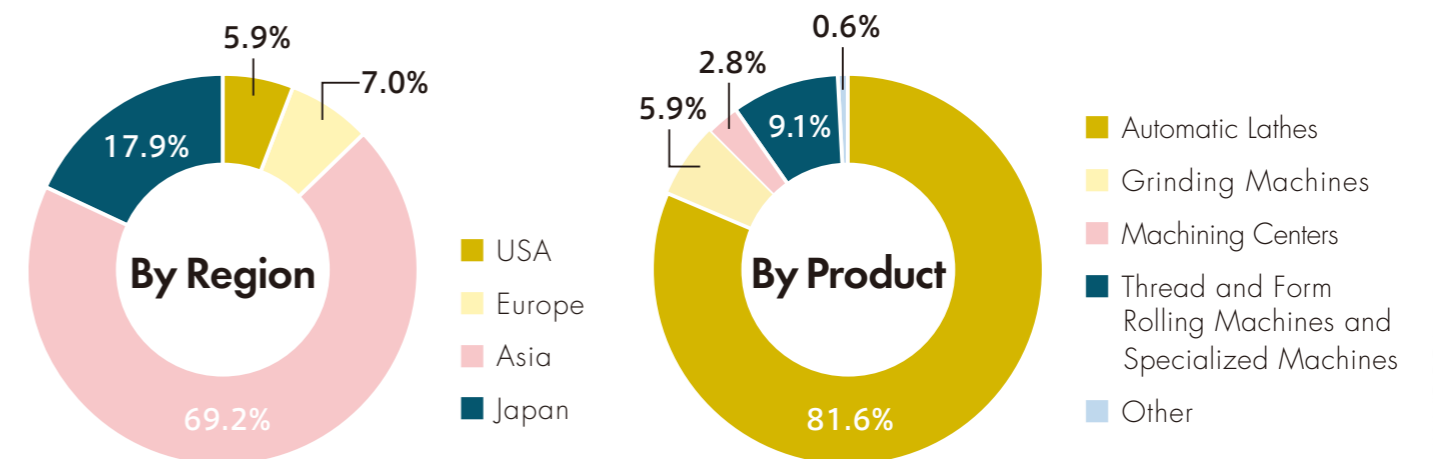


# Financial Highlights

## Consolidated Sales and Profit Trend



## Consolidated Sales by Region / Product for Year ended March 2015



## Domestic Base Points

### TSUGAMI CORPORATION(Head Office)

12-20, Tomizawa-cho, Nihonbashi, Chuo-ku, Tokyo 103-0006, JAPAN  
tel 81-3-3808-1711 fax 81-3-3808-1511

### Factories

#### Nagaoka Factory

1-1, Higashizao 1-chome, Nagaoka-shi, Niigata, 940-8630, JAPAN  
tel 81-258-35-0850 fax 81-258-35-0905

#### Takami Factory

1-2, Higashi-Takami 2-chome, Nagaoka-shi, Niigata, 940-0006, JAPAN  
tel 81-258-24-8151 fax 81-258-24-1579

#### Niigata Factory

132, Momoyama-cho 2-chome, Higashi-ku, Niigata-shi, Niigata, 950-0051, JAPAN  
tel 81-25-274-1281 fax 81-25-271-7917

### Office

#### < East Japan Marketing Division >

##### Tokyo office

12-20, Tomizawa-cho, Nihonbashi, Chuo-ku, Tokyo 103-0006, JAPAN  
tel 81-3-3808-1162 fax 81-3-3808-1511

##### Sendai Office

15-14, Hagino-machi 1-chome, Miyagino-ku, Sendai-shi, Miyagi, 103-0006, JAPAN  
tel 81-22-782-0360 fax 81-22-782-0381

##### Takasaki Office

4th floor, 172-16, Azuma-cho, Takasaki-shi, Gunma, 370-0045, JAPAN  
tel 81-27-323-3201 fax 81-27-323-3202

##### Nagaoka Office

1-1, Higashizao 1-chome, Nagaoka-shi, Niigata, 940-8630, JAPAN  
tel 81-258-35-0916 fax 81-258-35-0936

##### Suwa Office

256-2, Chino, Chino-shi, Nagano, 391-0001, JAPAN  
tel 81-266-72-1253 fax 81-266-72-0301

##### Shinshu Office

3600, Nakagomi, Saku-shi, Nagano, 385-8586, JAPAN  
tel 81-267-62-7113 fax 81-267-63-3588

#### < Central Japan Marketing Division >

##### Nagoya office

2nd floor, 40-15, Daikan-cho, Higashi-ku, Nagoya-shi, Aichi, 461-0002, JAPAN  
tel 81-52-930-2301 fax 81-52-930-2311

#### < West Japan Marketing Division >

##### Osaka office

2nd floor, 15-11, Toyotsu-cho, Suita-shi, Osaka, 564-0051, JAPAN  
tel 81-6-6338-5181 fax 81-6-6338-2262

##### Fukuoka office

23-15, Minamigaoka 2-chome, Onojo-shi, Fukuoka, 816-0964, JAPAN  
tel 81-92-595-5455 fax 81-92-595-5456

### Group Companies

#### TSUGAMI MACHINERY CO., LTD.(Head Office)

1-20, Asada 3-chome, Kawasaki-ku Kawasaki-shi, Kanagawa, 210-0847, Japan  
tel 81-44-328-3782 fax 81-44-322-2736

#### TSUGAMI GENERAL SERVICE CO., LTD.(Head Office)

1-1, Higashizao 1-chome, Nagaoka-shi, Niigata, 940-0029, JAPAN  
tel 81-258-36-8903 fax 81-258-35-0856

## Overseas Base Points

### < Overseas Division >

12-20, Tomizawa-cho, Nihonbashi, Chuo-ku, Tokyo 103-0006, JAPAN  
tel 81-3-3808-1172 fax 81-3-3808-1175

### < China >

#### PRECISION TSUGAMI (CHINA) CORPORATION

No.2001 Pingcheng Road, Economic and Technological Development Zone, Pinghu, Zhejiang, China  
tel 86-573-8526-8718 fax 86-573-8526-8728

#### SHANGHAI BRANCH

Room 1807, Xinyin Building, No.888 Yishan Road, Shanghai, China  
tel 86-21-6432-0828 fax 86-21-6432-0829

#### QINGDAO BRANCH

No.213 Chongqing Road, Licang District, Qingdao City, Shandong, China  
tel 86-532-6898-2802 fax 86-532-6898-2803

#### WUXI BRANCH

Room 10-403, Xingzhou Business Park, NO.89 Xingchuang 4 Road, New District, Wuxi City, Jiangsu China  
tel 86-510-6875-8991 fax 86-510-6875-8990

#### CHONGQING BRANCH

Room 2002, Sofitel Forebase B Building, No.137 Second Keyuan Road, Jiulongpo District, Chongqing City, China  
tel 86-23-6868-9358 fax 86-23-6868-9359

#### GUANGZHOU OFFICE

Room 2512, Chengjian Building, No.189 Tiyu West Road, Tianhe District, Guangzhou City, Guangdong, China  
tel 86-020-8718-1221 fax 86-020-8718-1277

#### DALIAN OFFICE

Room 914, Jinfeng Building, No.130 Jinma Road, Economic and Technological Development Zone, Dalian City, China  
tel 86-411-8756-0350 fax 86-411-8756-0350

### < Thai >

#### TSUGAMI (THAI) CO., LTD.

23/20-21 Sorachai Bldg., 12th Floor Soi Sukhumvit 63, Sukhumvit Rd., Kwaeng Klongton Nua, Khet Wattana Bangkok 10110, Thailand  
tel 662-714-3022 fax 662-714-3024

### < Germany >

#### TSUGAMI EUROPE GmbH

Trakehner Str. 5, 60487 Frankfurt am Main, Germany  
tel 49-69-1540-8900 fax 49-69-1540-8903

### < Korea >

#### TSUGAMI KOREA Co., Ltd.

335-24 Doksan1-dong, Geumcheon-Gu, Seoul, KOREA 153-814  
tel 82-2-553-2056 fax 82-2-553-2057

#### PINGHU SALES HEADQUARTERS

No.2001 Pingcheng Road, Economic and Technological Development Zone, Pinghu, Zhejiang, China  
tel 86-573-8526-8718 fax 86-573-8528-8971

#### DONGGUAN BRANCH

Room 116-117, Gaosheng Science Building, Gaosheng Science Park, Hongtu Road, Nancheng District, Dongguan City, Guangdong, China  
tel 86-769-8238-9472 fax 86-769-8238-9471

#### WUHAN BRANCH

Room 1010, International Building 1, Guanggu Headquarters, No. 58, Guanggu Avenue, East Lake Hi-Tech Development Zone, Wuhan City, Hubei, China  
tel 86-27-8731-5786 fax 86-27-8731-5787

#### SHENYANG BRANCH

Room 1810, Fengtian Yinzuo C Building, No.167 Huigong Street, Shenhe District, Shenyang City, Liaoning, China  
tel 86-24-3129-1801 fax 86-24-3129-1802

#### TIANJIN BRANCH

Room 1915, Jinxing Economic and United Building, No.65 Xiqing Road, Hongqiao District, Tianjin, China  
tel 86-22-8727-7268 fax 86-22-8727-7268

#### NINGBO OFFICE

No.49, Lane.199, Yongfeng West Road, Haishu District, Ningbo City, Zhejiang, China  
tel 86-188-6787-8928

#### Shinagawa Precision Machinery (Zhejiang) CO.,LTD.

No.2088 Pingcheng Road, Economic and Technological Development Zone, Pinghu, Zhejiang, China  
tel 86-573-8598-2088 fax 86-573-8598-2128

### < India >

#### TSUGAMI PRECISION ENGINEERING INDIA PRIVATE LIMITED

Plot No. A-8, Sipcot Industrial Growth Center, Oragadam, Vallam B Village, Sriperumbudhur Taluk, Kancheepuram, 602 015, India  
tel 91-44-67176717 fax 91-44-67176721

### < Singapore >

#### TSUGAMI Universal Pte. Ltd.

8 Ubi Road 2 #04-13 Zervex Singapore 408538  
tel 65-6634-1808 fax 65-6634-3008



 **TSUGAMI CORPORATION**

Head Office / 12-20, Tomizawa-cho, Nihonbashi, Chuo-ku, Tokyo 103-0006, JAPAN

tel 81-3-3808-1172 fax 81-3-3808-1175

URL : <http://www.tsugami.co.jp/>